



Organization Chart

Source:

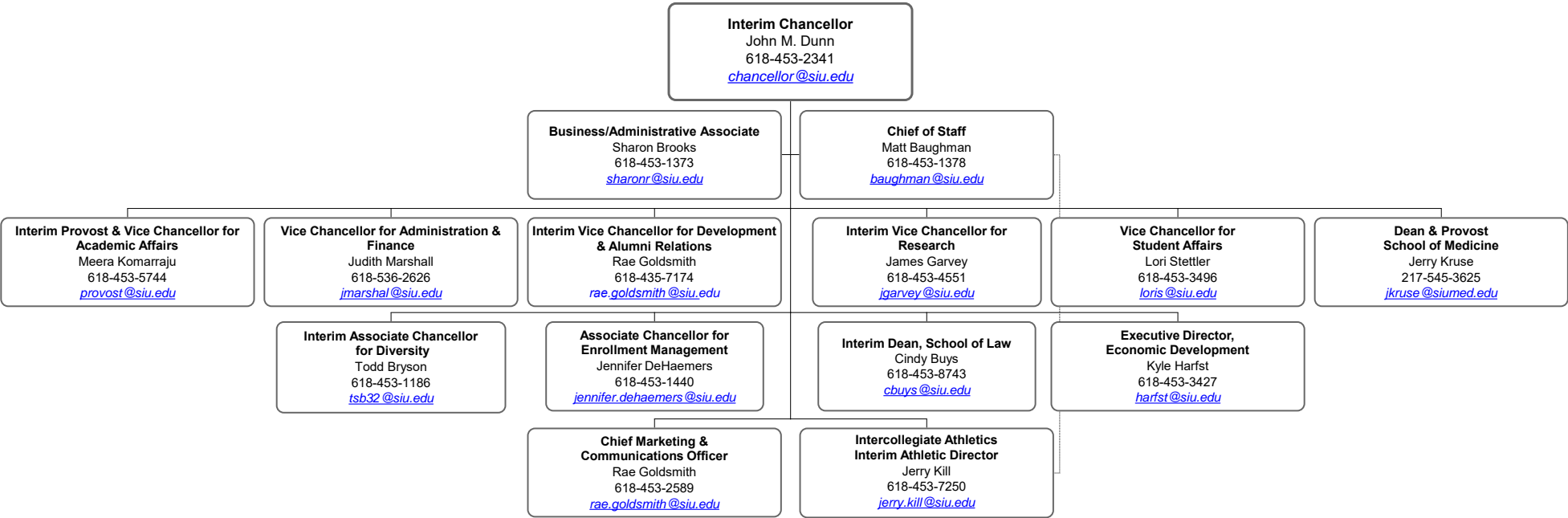
siu.edu/_documents/siu-organization-chart.pdf

Downloaded: 6/14/19

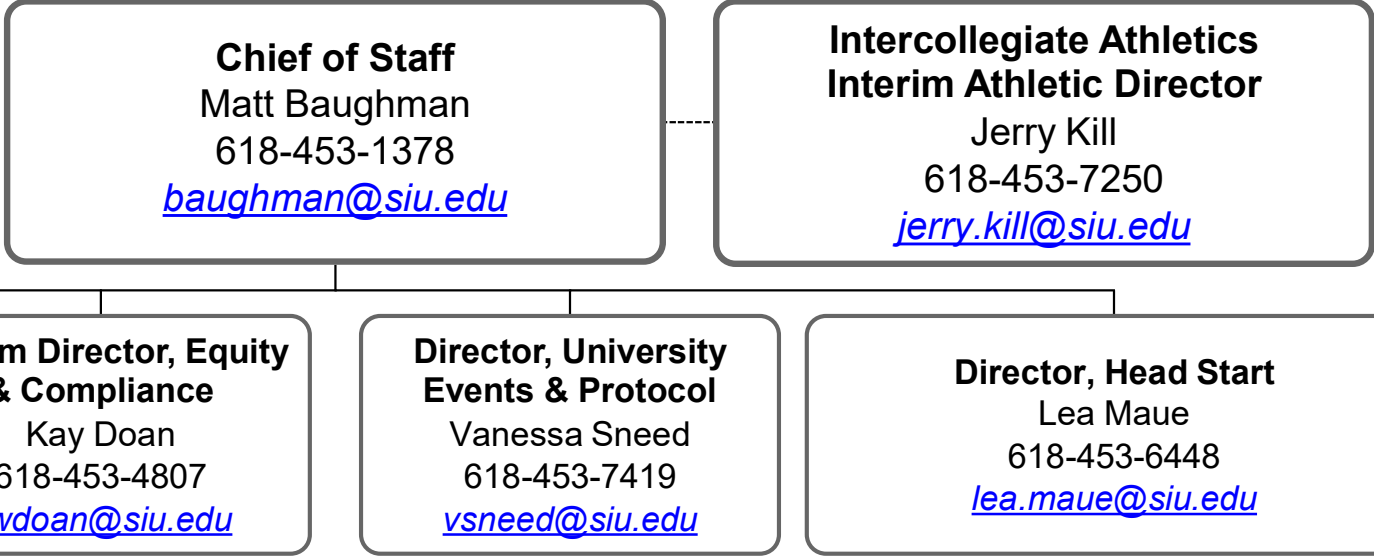
ORGANIZATIONAL CHART
Southern Illinois University Carbondale

Office of the Chancellor.....	02
Provost & Vice Chancellor for Academic Affairs.....	03
Associate Provost for Academic Administration.....	04
Associate Provost for Academic Programs.....	05
Assistant Provost & Chief Information Officer.....	06
Agriculture, College of.....	07
Applied Sciences & Arts, College of.....	08
Business, College of.....	09
Education & Human Services, College of.....	10
Engineering, College of.....	11
Graduate School.....	12
Liberal Arts, College of.....	13
Library Affairs.....	14
Mass Communication & Media Arts, College of.....	15
Science, College of.....	16
Vice Chancellor for Administration & Finance.....	17
Vice Chancellor for Development & Alumni Relations.....	18
Associate Chancellor for Enrollment Management.....	19
Vice Chancellor for Research.....	20
Vice Chancellor for Student Affairs.....	21
Associate Chancellor for Diversity.....	22
Equity & Compliance.....	23
Intercollegiate Athletics.....	24
Law, School of.....	25
Medicine, School of.....	26
University Communications & Marketing.....	27

Office of the Chancellor

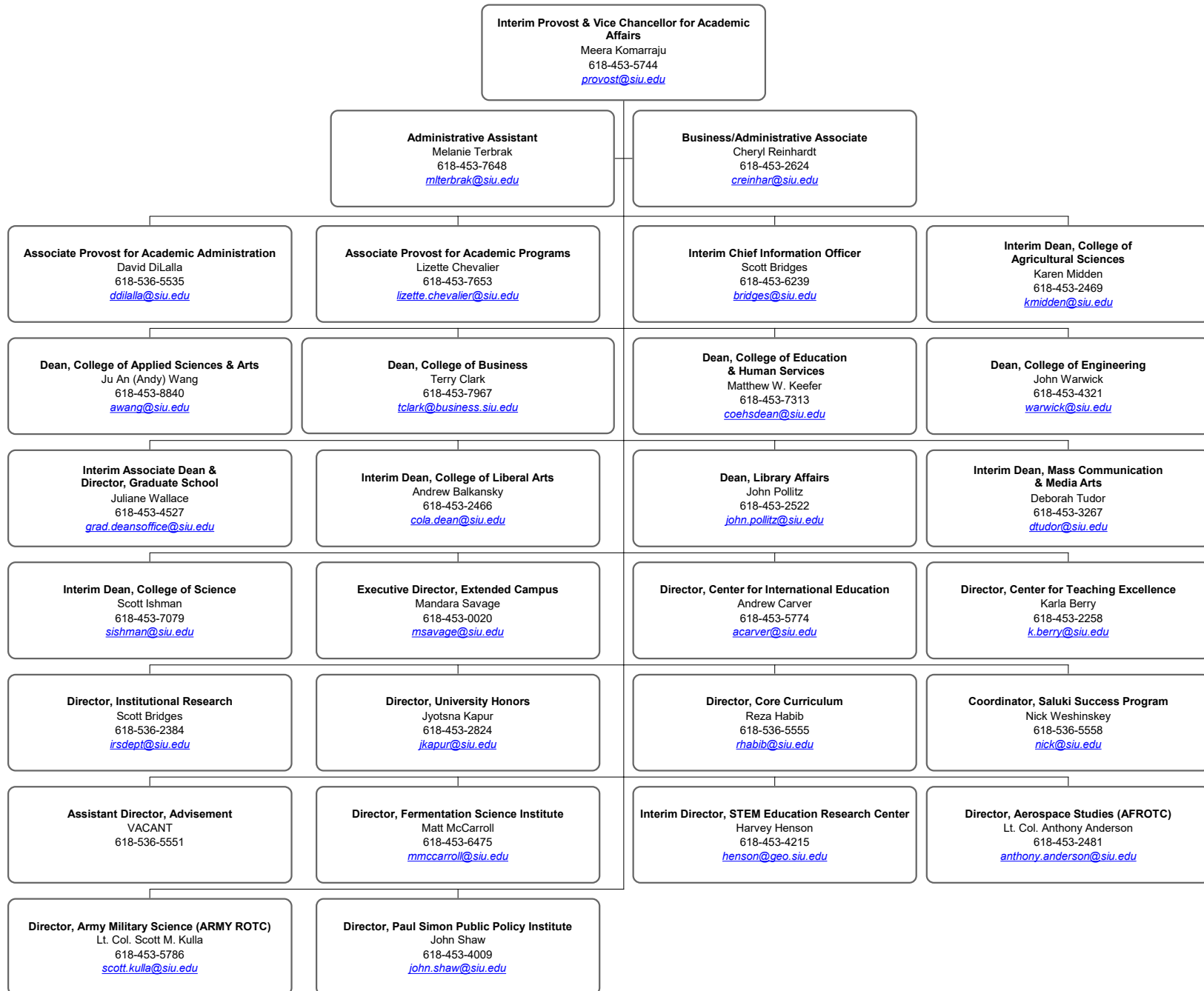


Office of the Chancellor

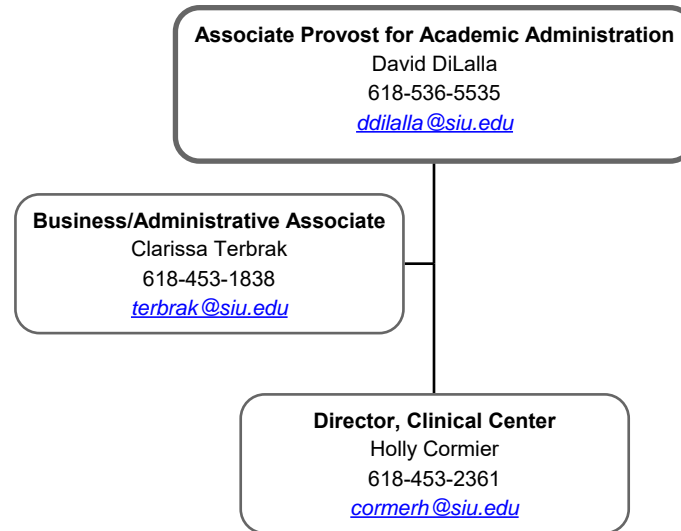


Provost & Vice Chancellor for Academic Affairs

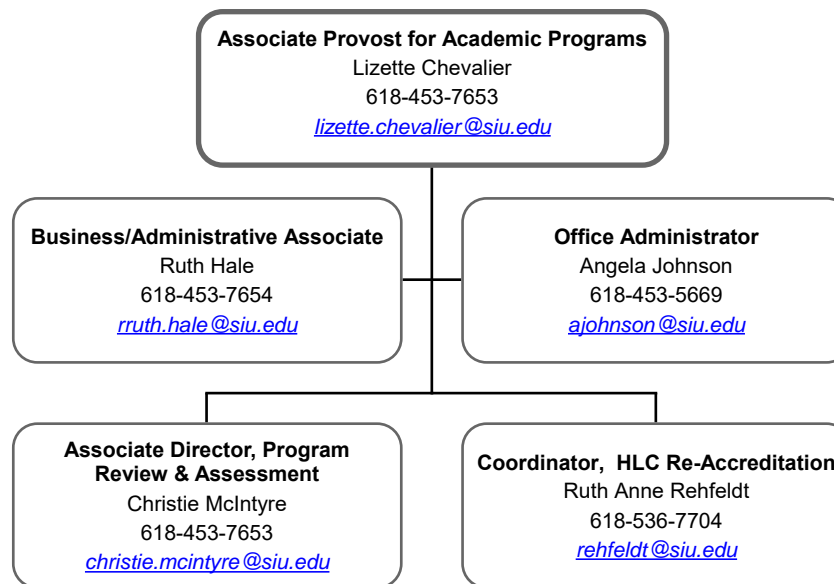
Reports to the Chancellor



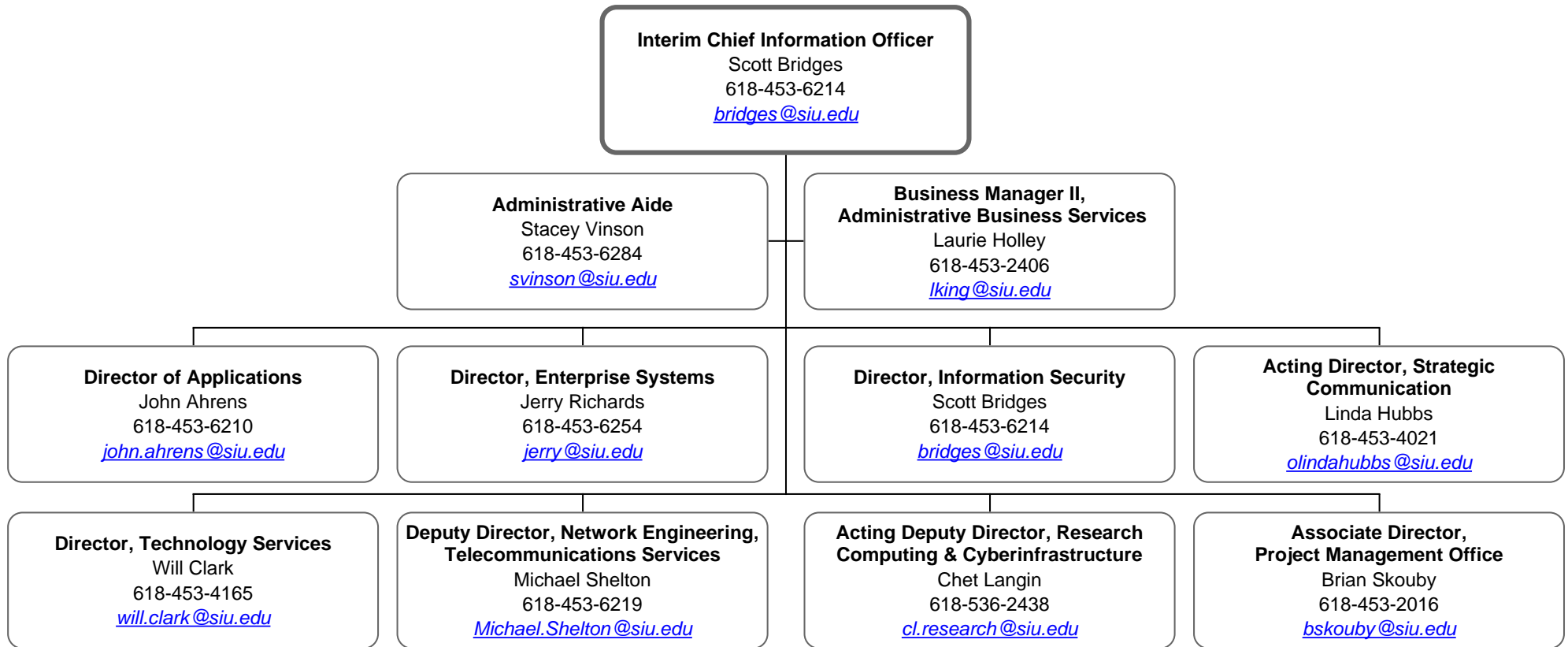
Associate Provost for Academic Administration
Reports to the Provost & Vice Chancellor for Academic Affairs



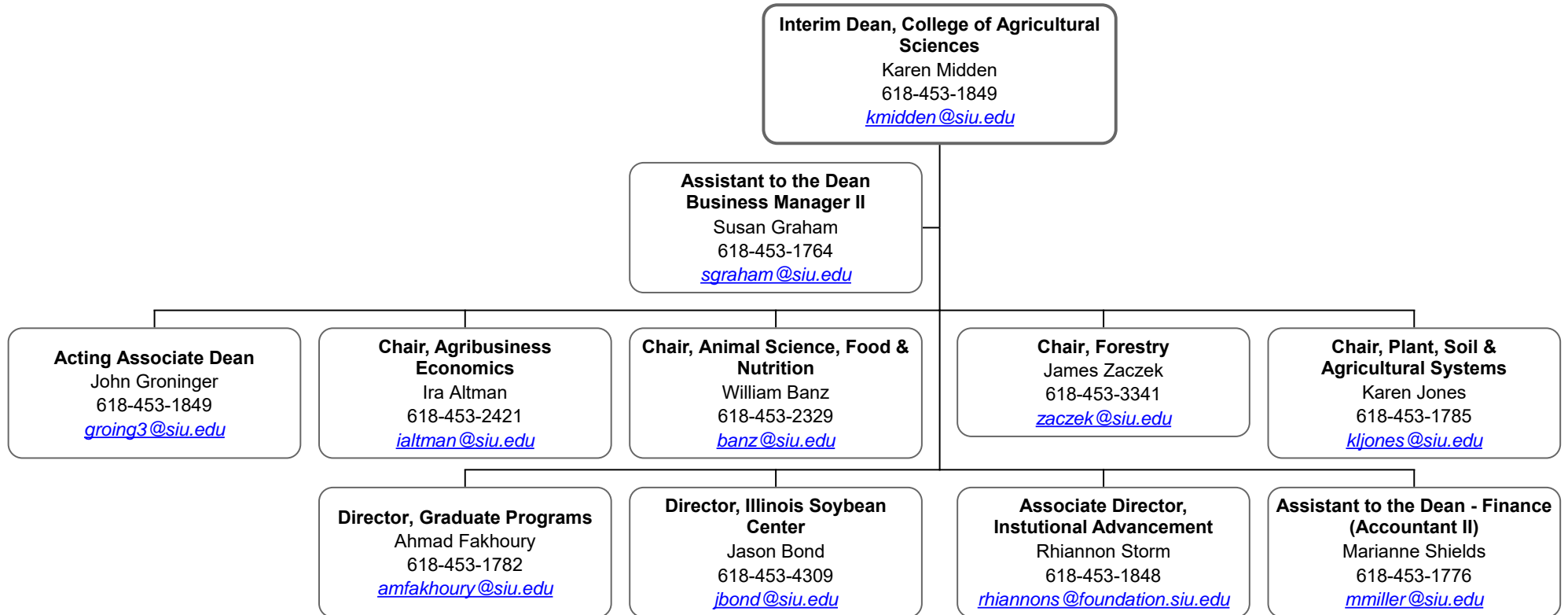
Associate Provost for Academic Programs
Reports to the Provost & Vice Chancellor for Academic Affairs



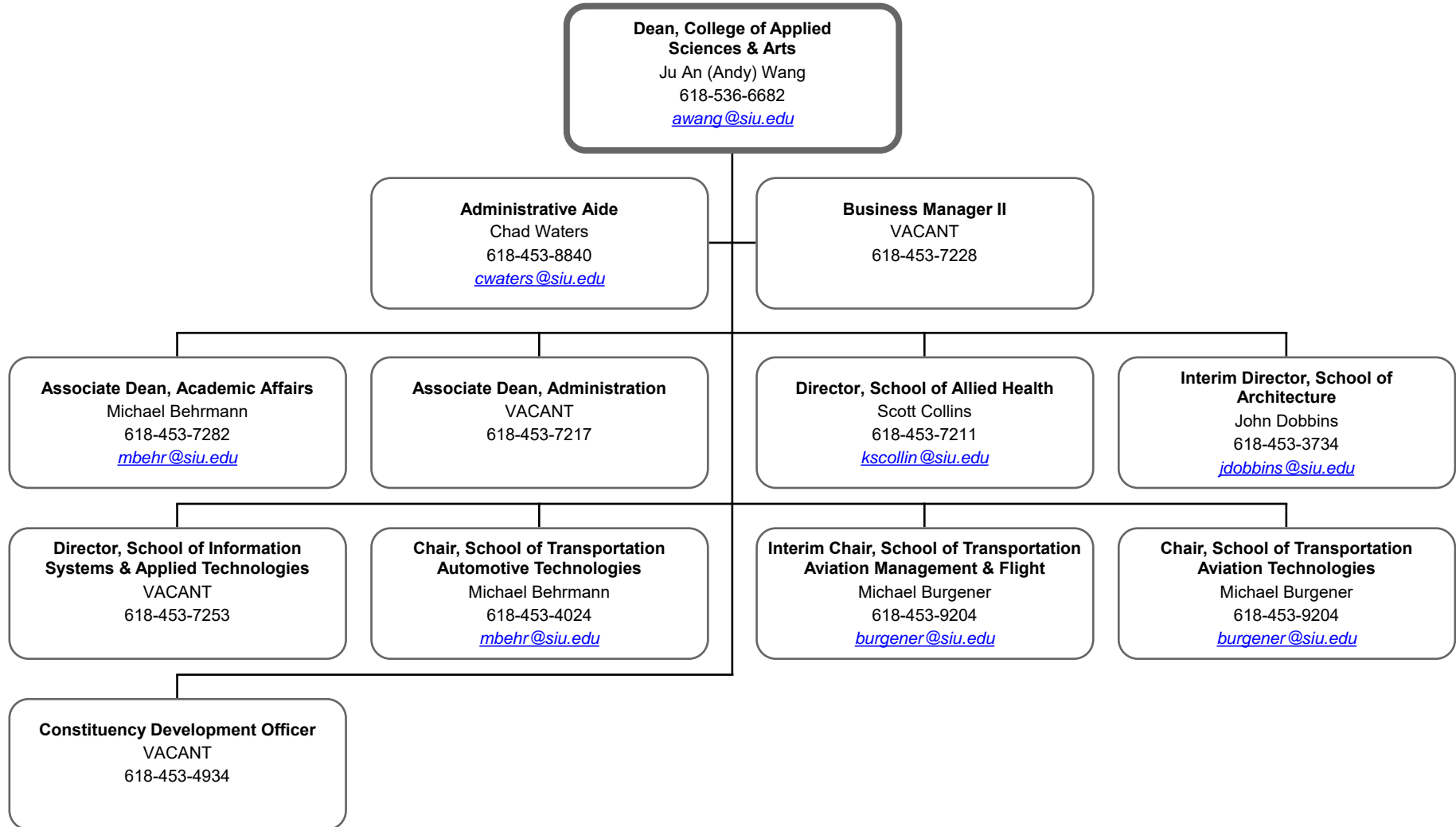
Assistant Provost & Chief Information Officer
Reports to the Provost & Vice Chancellor for Academic Affairs



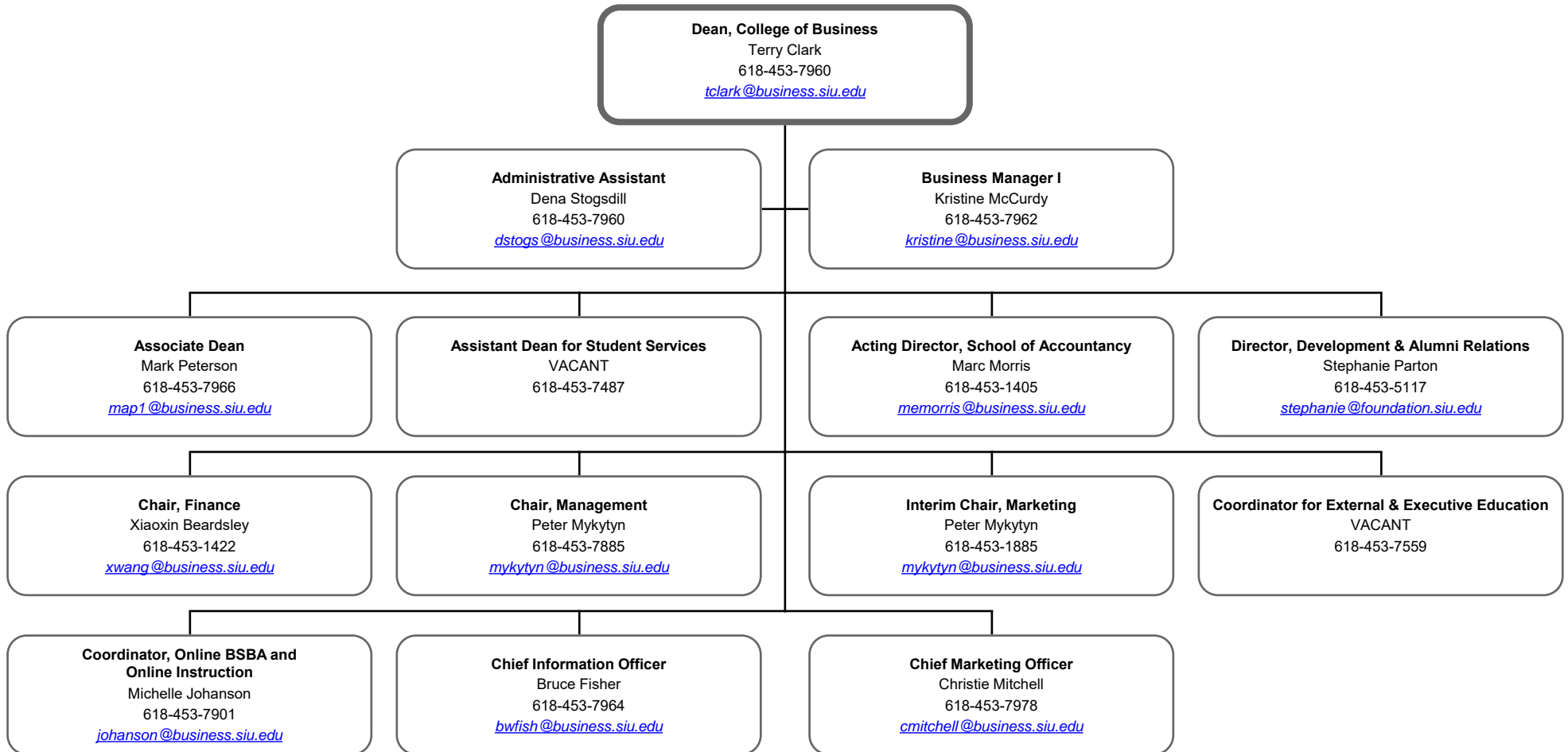
College of Agricultural Sciences
Reports to the Provost and Vice Chancellor for Academic Affairs



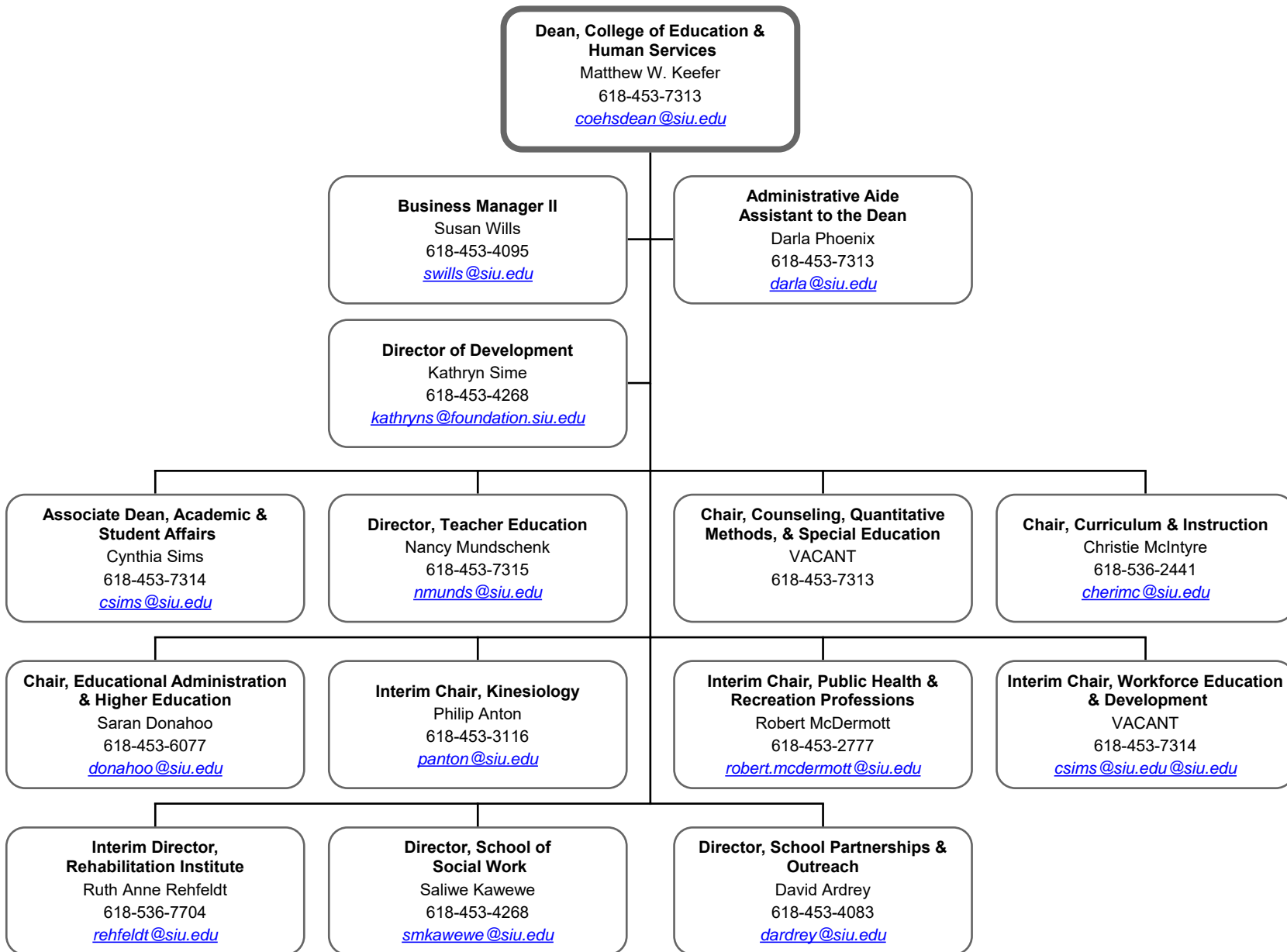
College of Applied Sciences and Arts
Reports to the Provost and Vice Chancellor for Academic Affairs



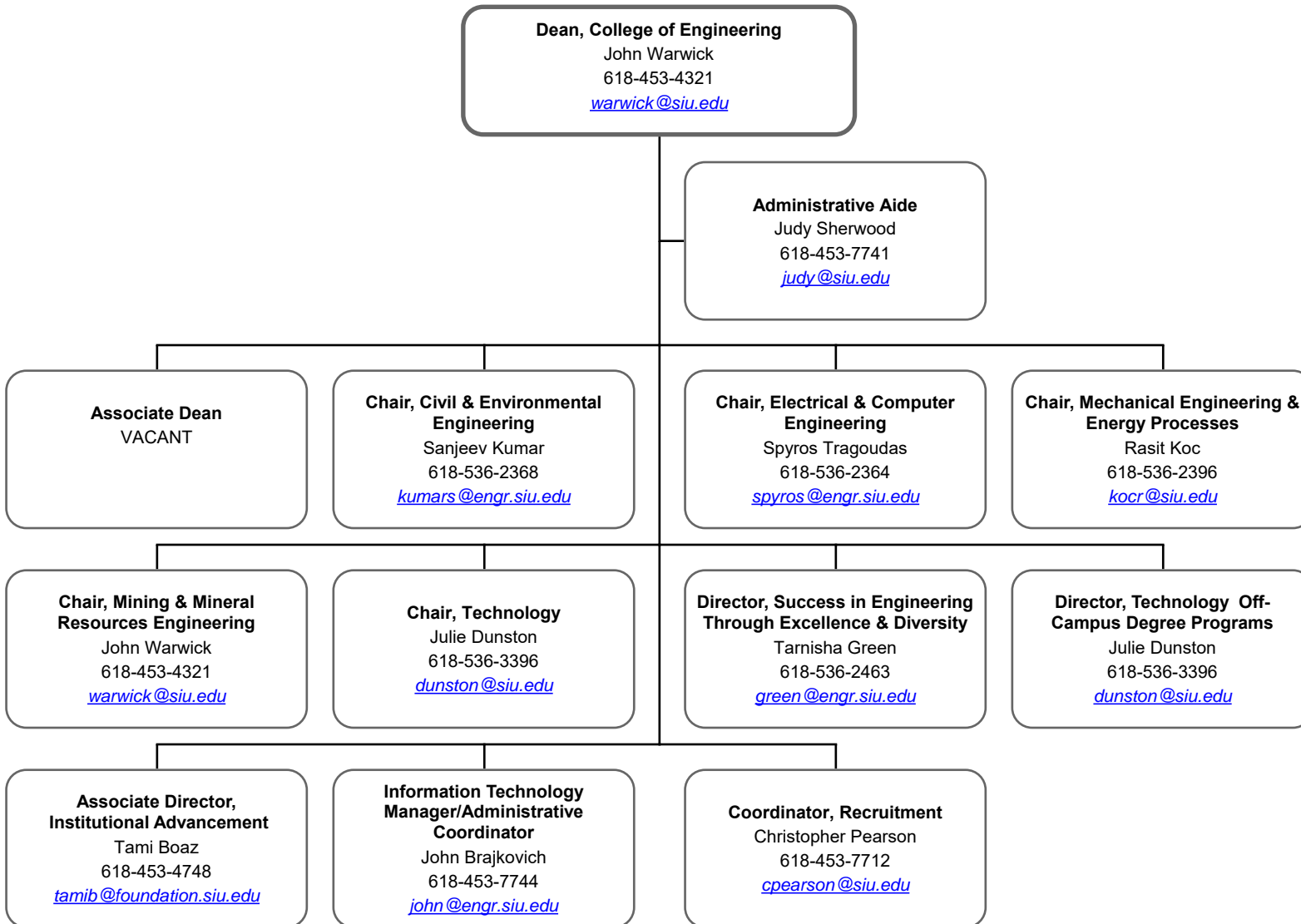
College of Business
Reports to the Provost & Vice Chancellor for Academic Affairs



College of Education & Human Services
 Reports to Provost & Vice Chancellor For Academic Affairs

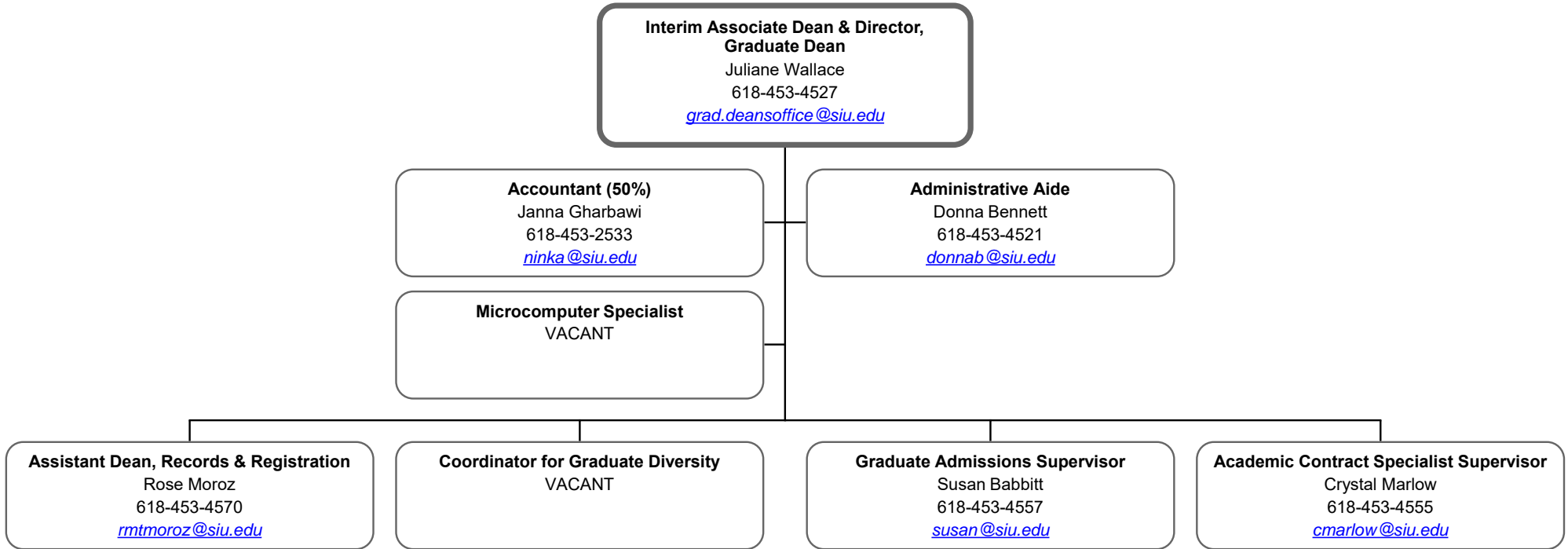


College of Engineering
Reports to the Provost & Vice Chancellor for Academic Affairs

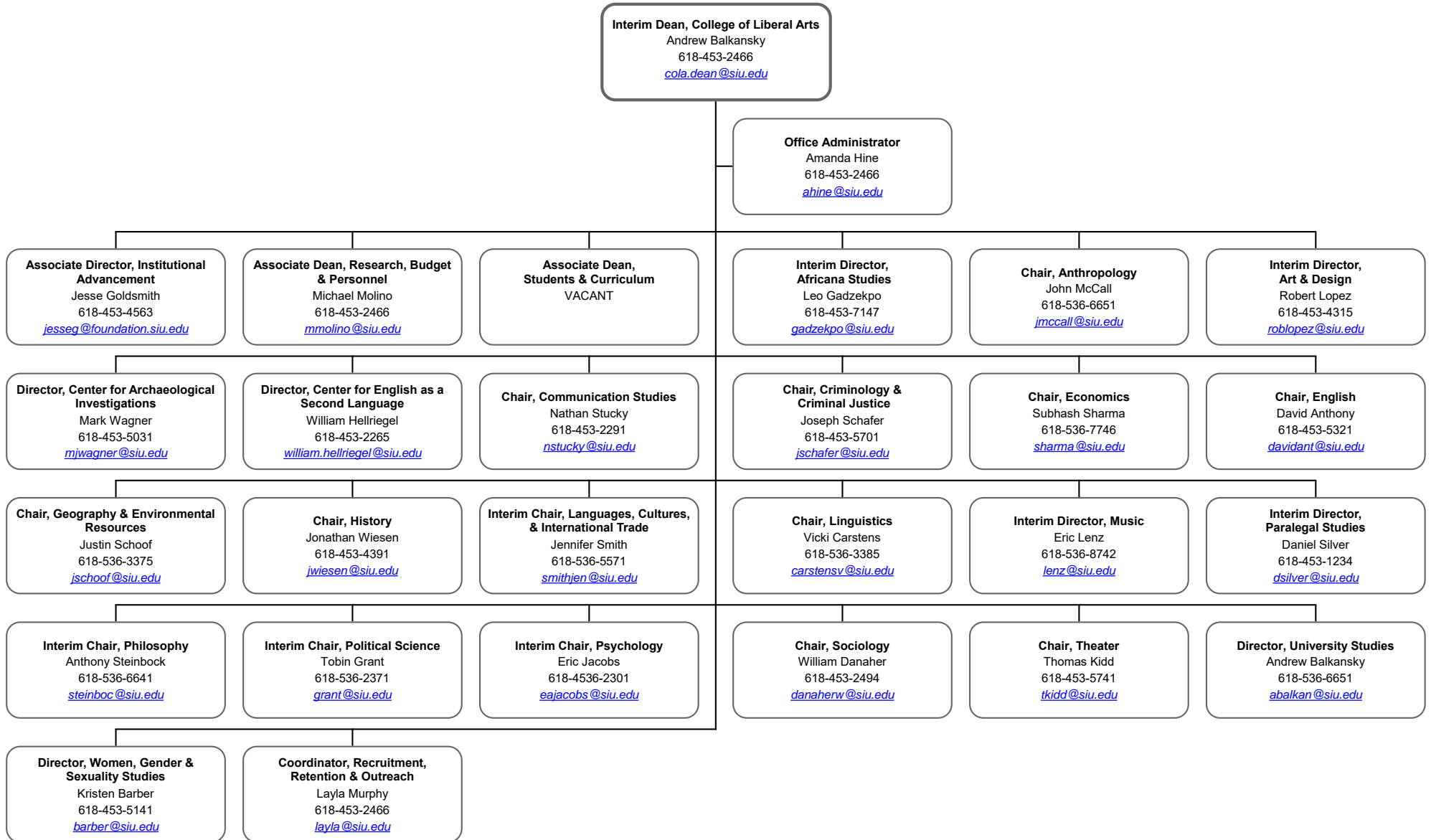


Graduate School

Reports to the Provost & Vice Chancellor for Academic Affairs

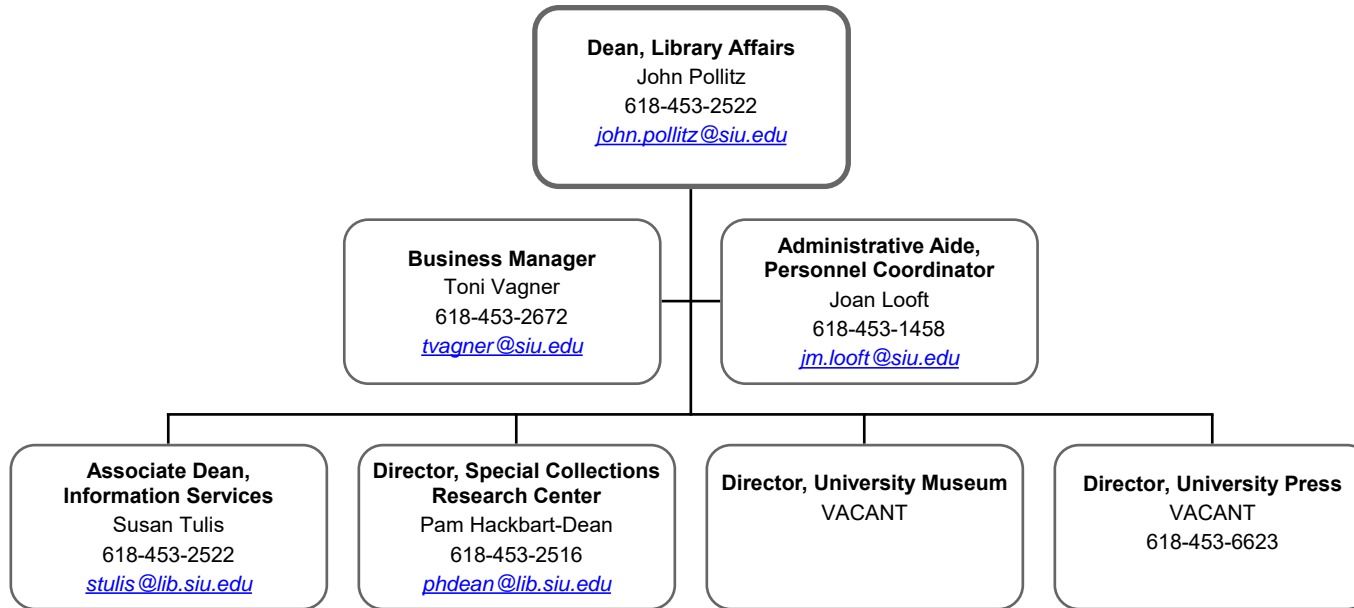


College of Liberal Arts
Reports to the Provost & Vice Chancellor for Academic Affairs



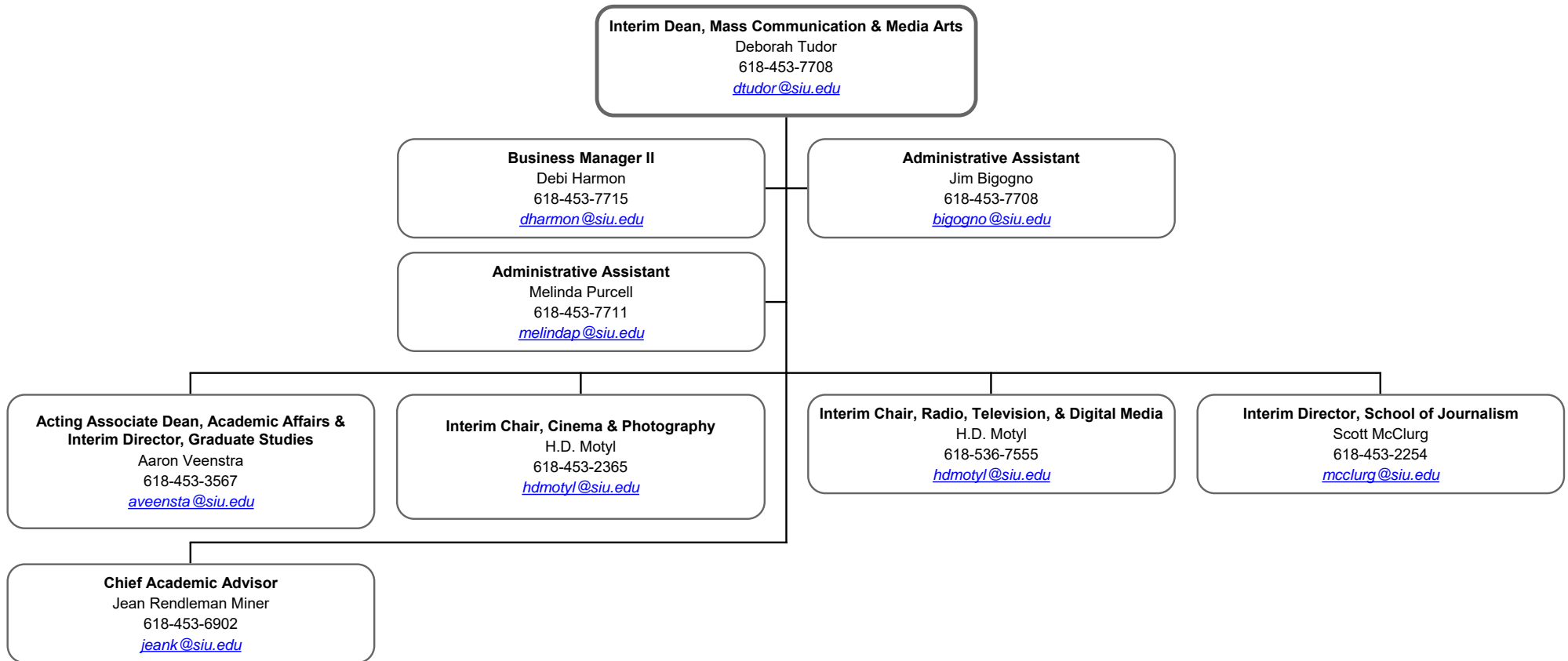
Library Affairs

Reports to the Provost & Vice Chancellor for Academic Affairs

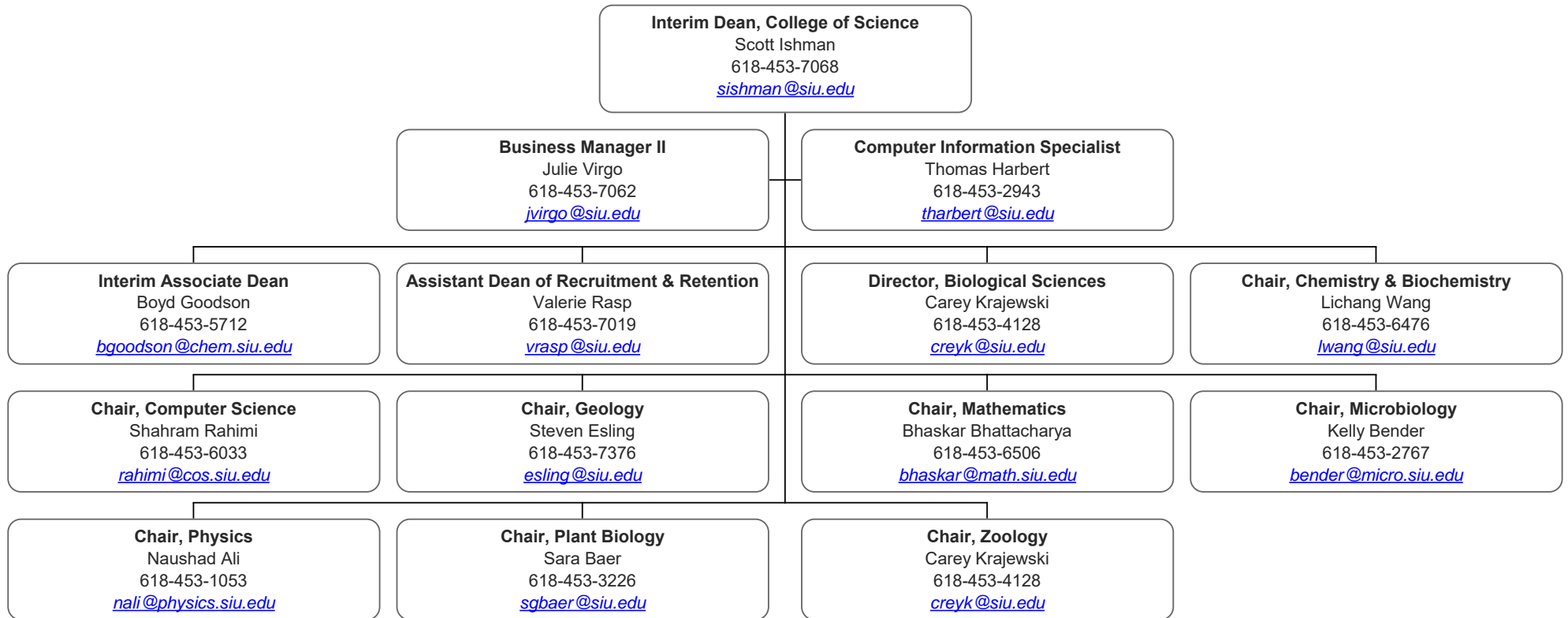


College of Mass Communication & Media Arts

Reports to the Provost & Vice Chancellor for Academic Affairs

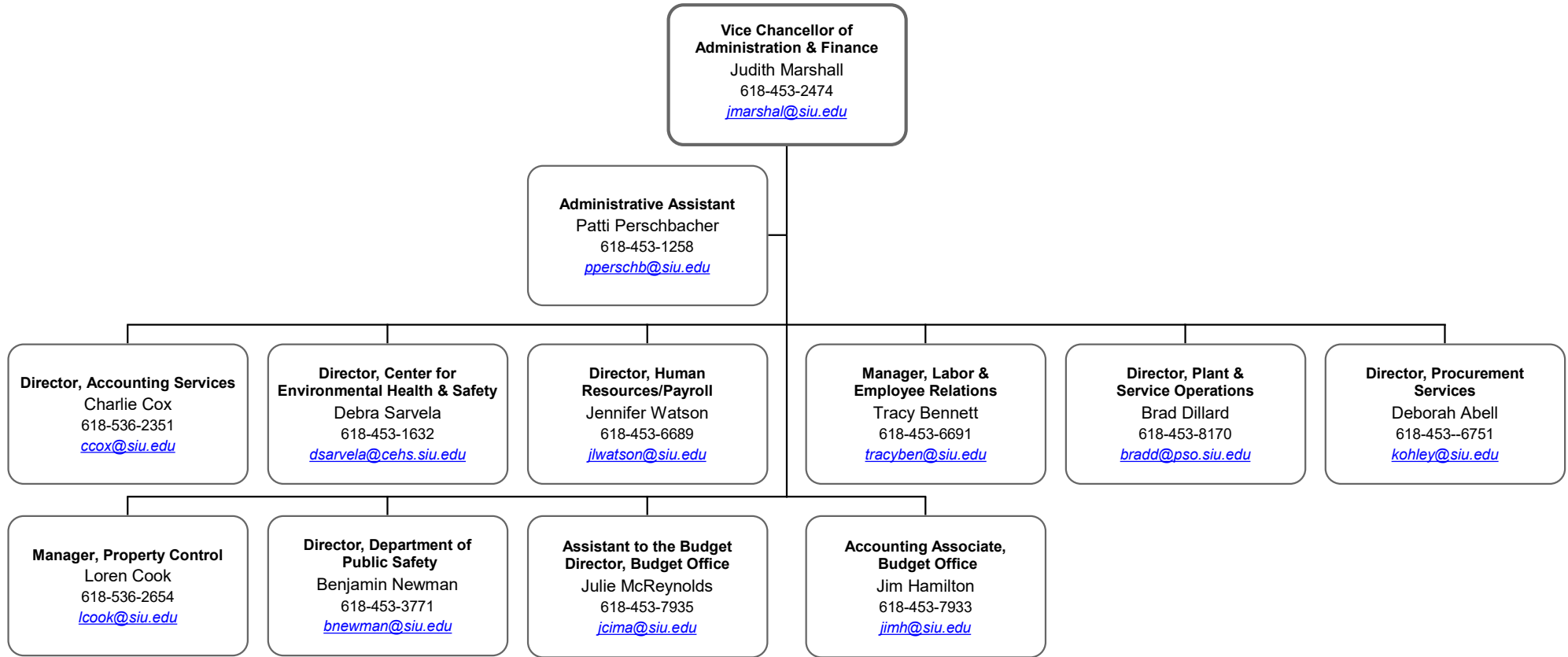


College of Science
Reports to the Provost and Vice Chancellor for Academic Affairs

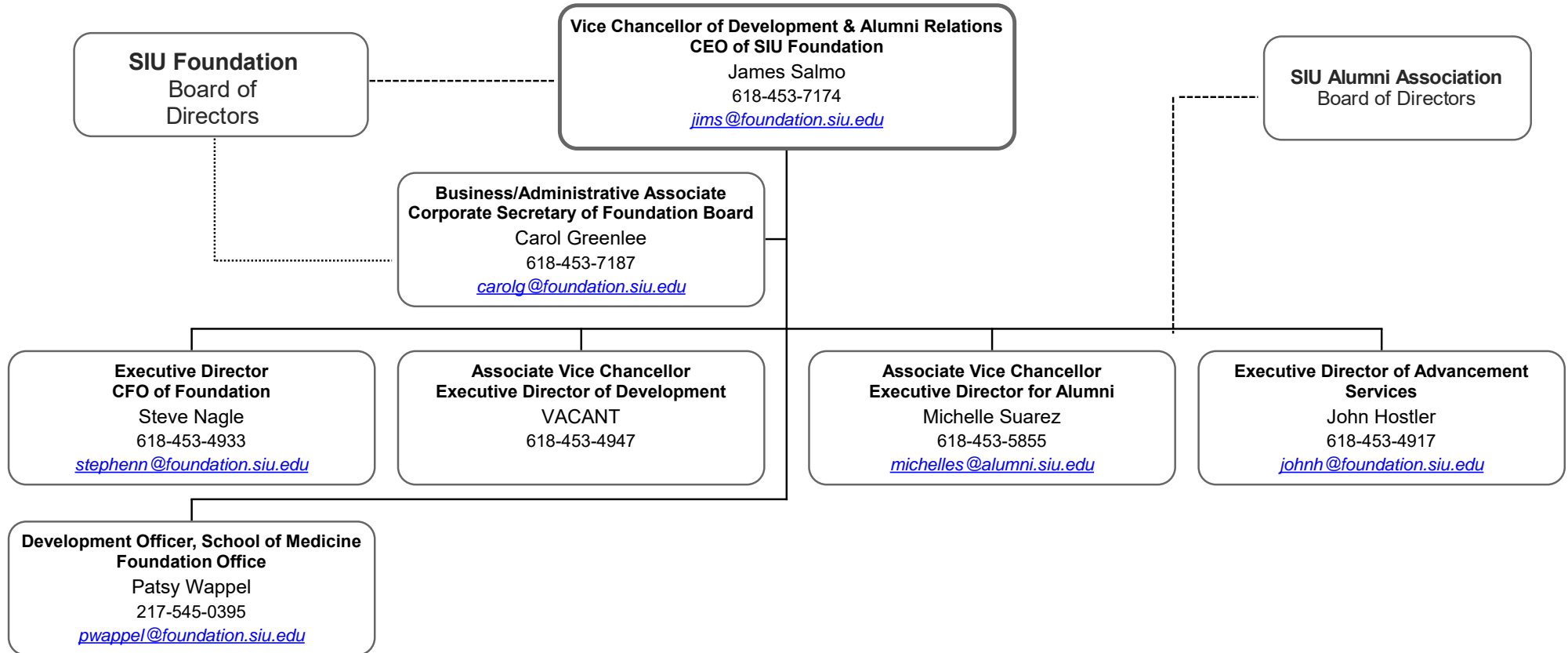


Vice Chancellor of Administration and Finance

Reports to the Chancellor

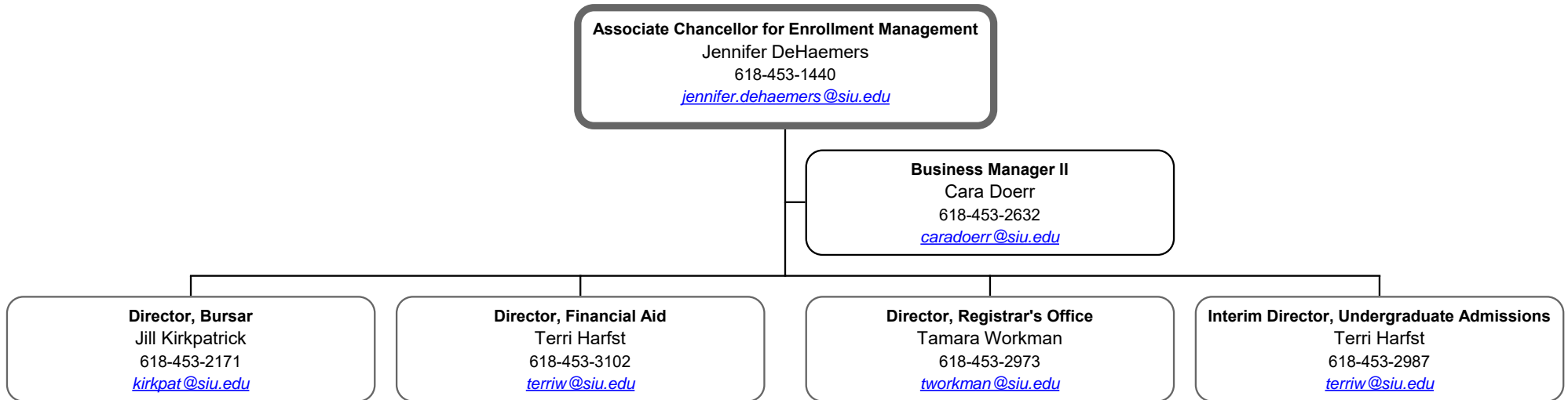


Vice Chancellor for Development and Alumni Relations
Reports to the Chancellor



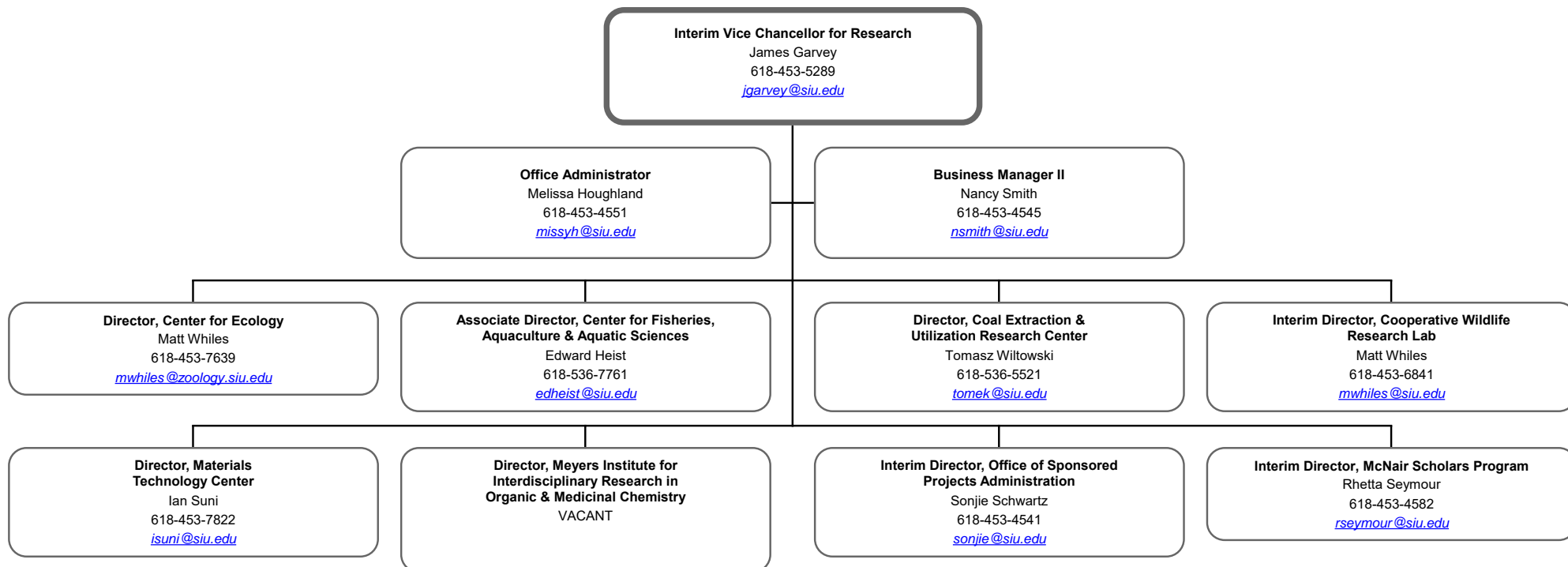
Associate Chancellor for Enrollment Management

Reports to the Chancellor



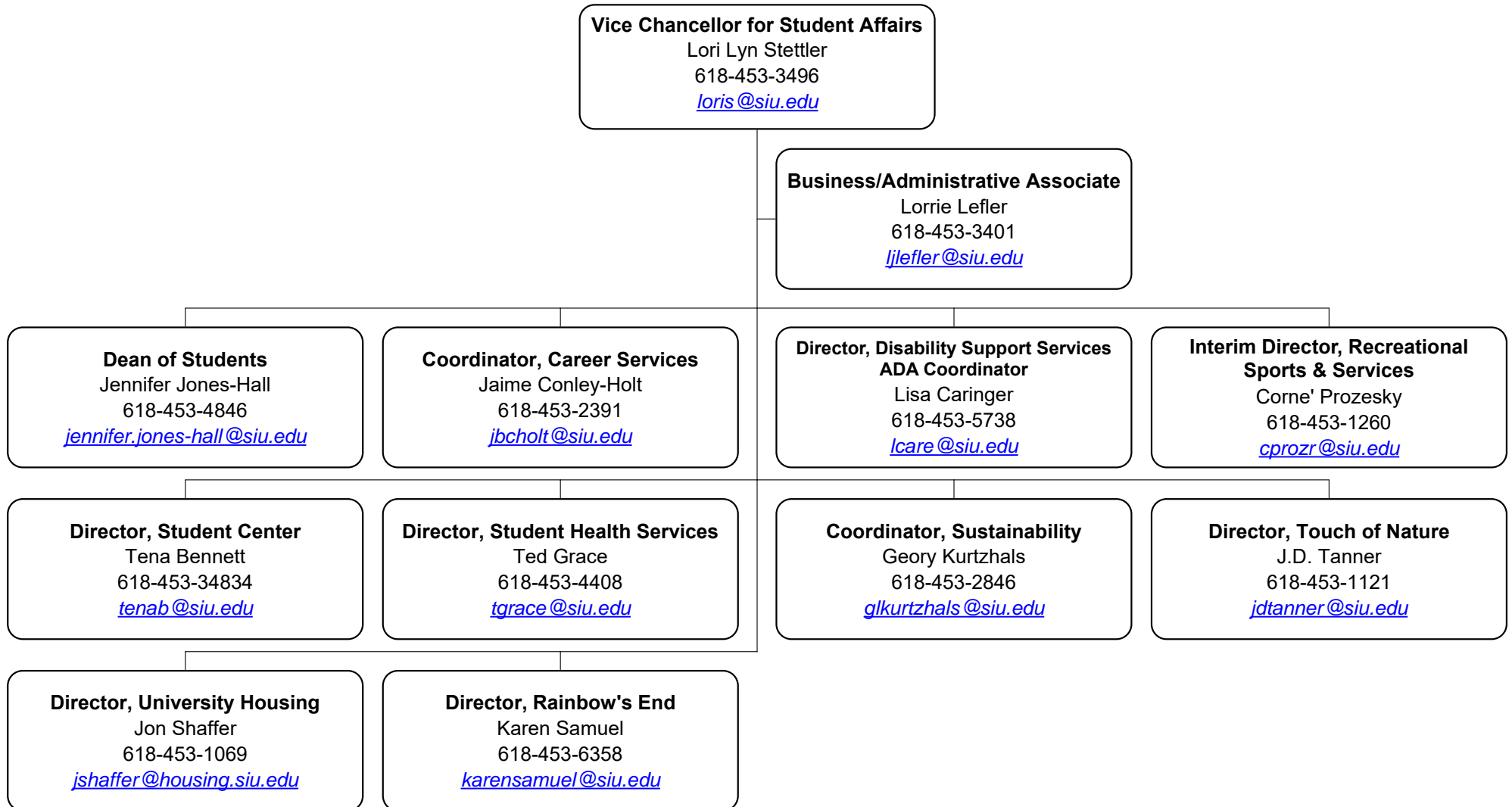
Vice Chancellor for Research

Reports to the Chancellor

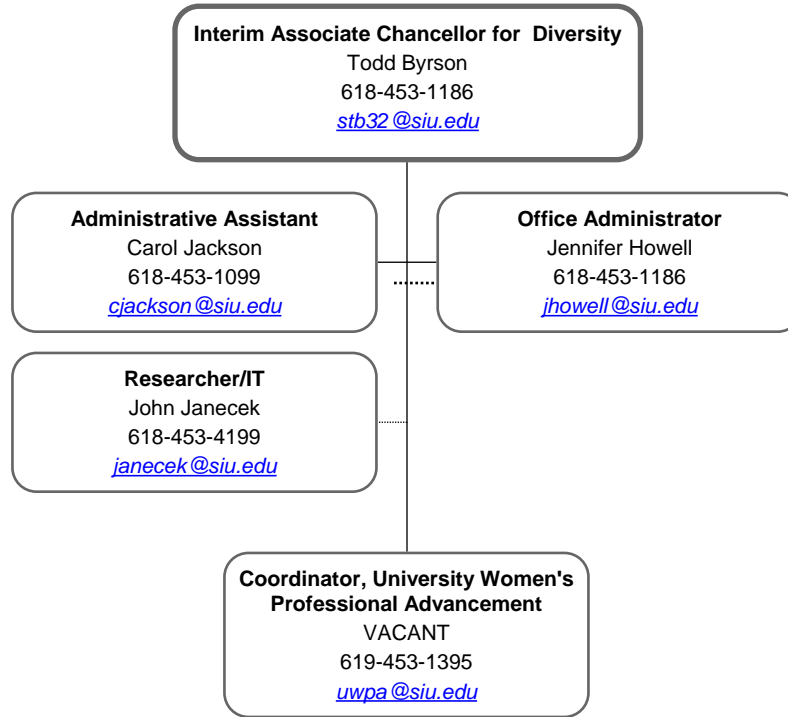


Vice Chancellor for Student Affairs

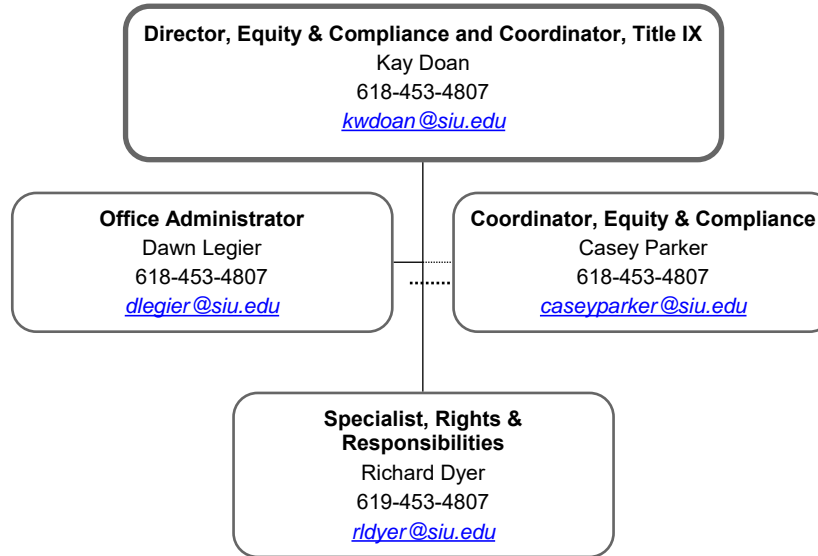
Reports to the Chancellor



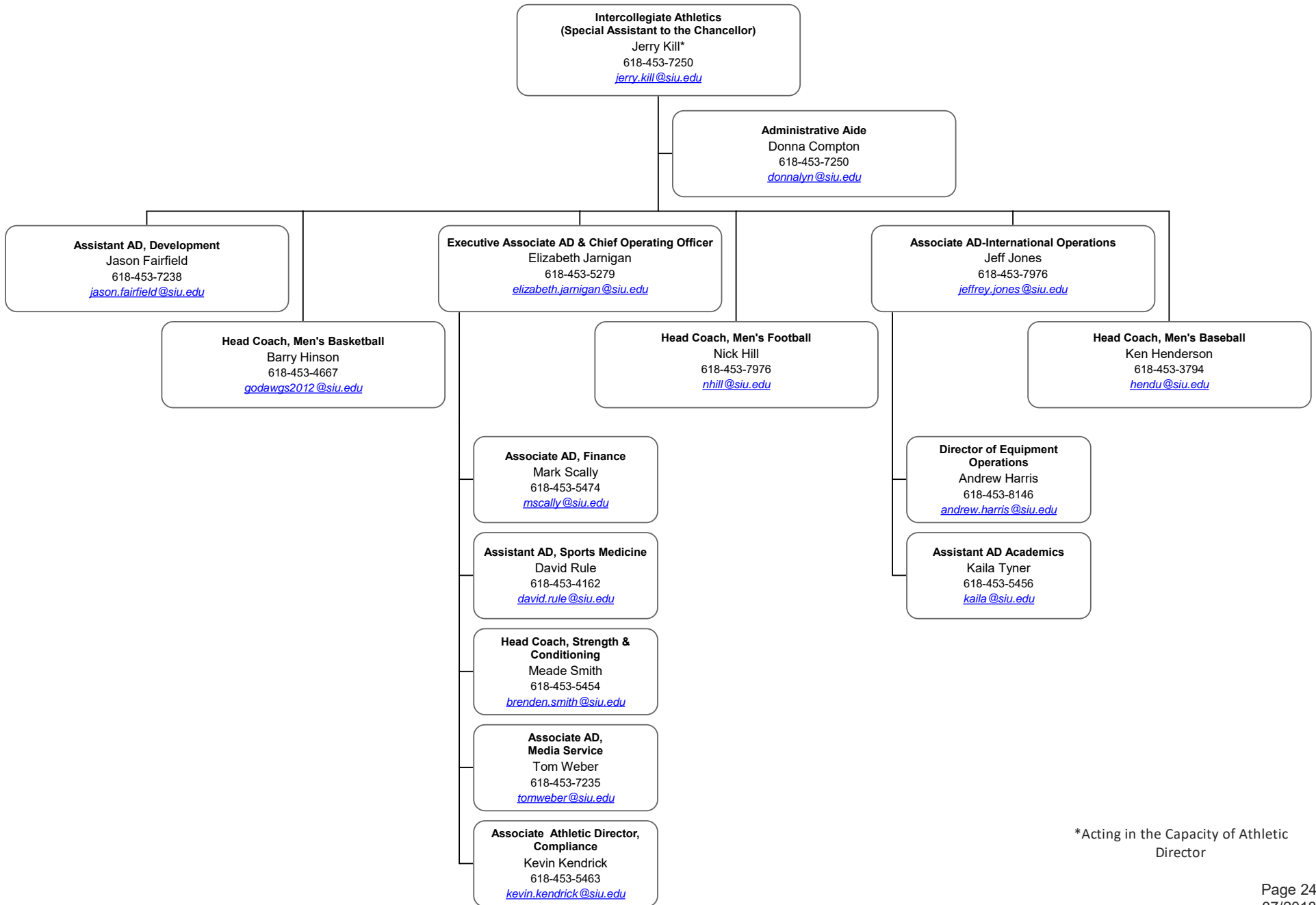
Office of the Associate Chancellor for Diversity
Reports to the Chancellor



Office of Equity and Compliance
Reports to the Chancellor

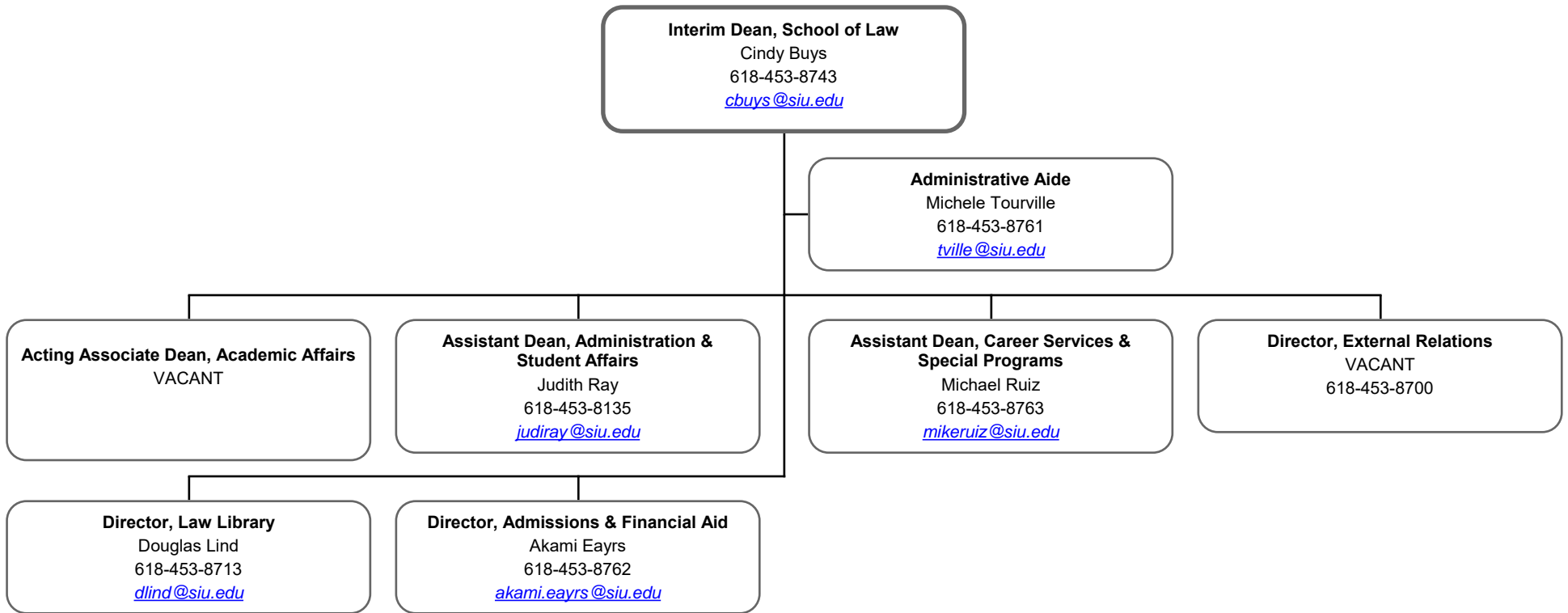


Intercollegiate Athletics
Reports to the Chancellor

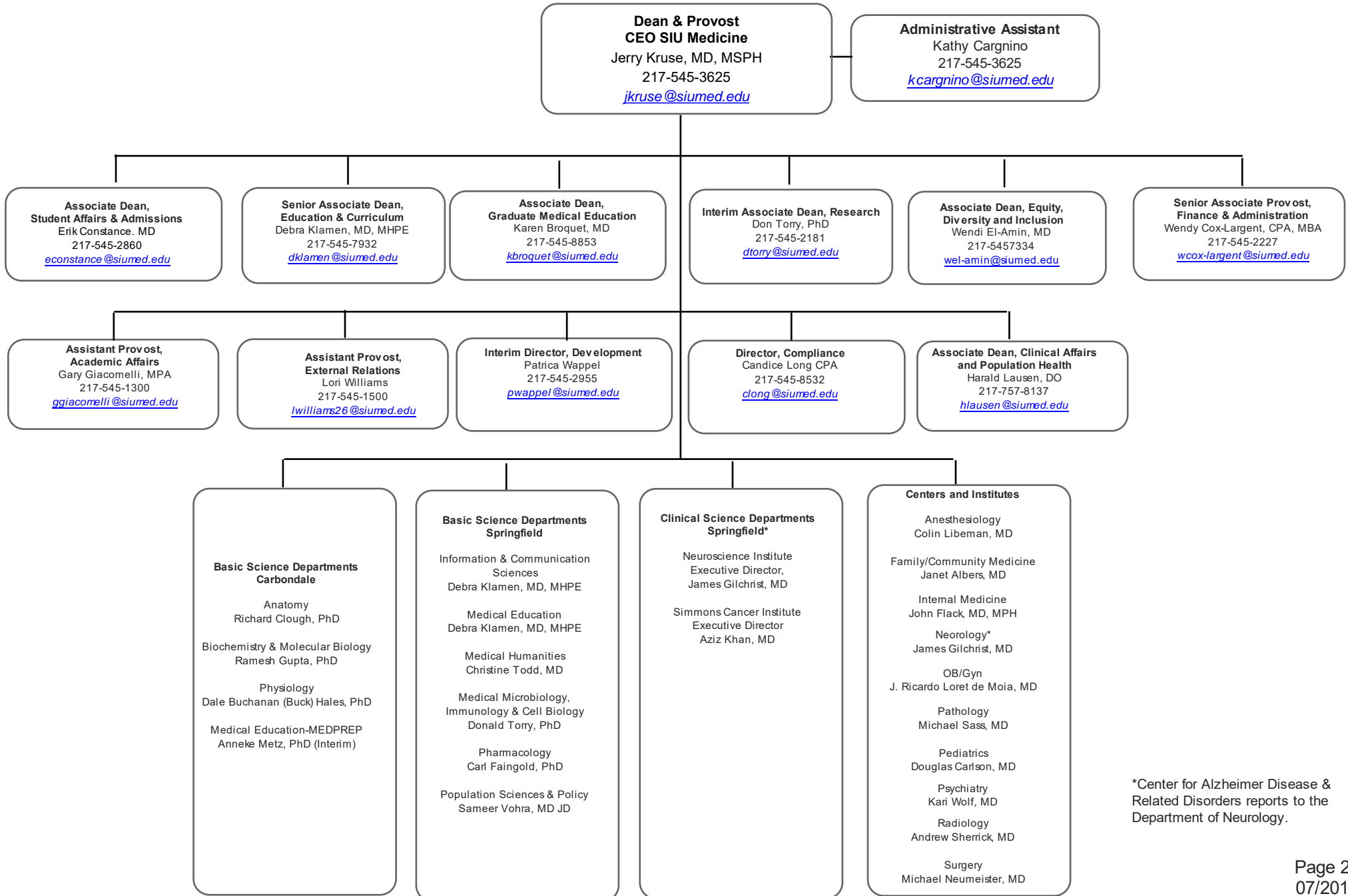


*Acting in the Capacity of Athletic Director

School of Law
Reports to the Chancellor



School of Medicine Reports to the Chancellor



*Center for Alzheimer Disease & Related Disorders reports to the Department of Neurology.

University Communications & Marketing

Reports to the Chancellor

