

## ACHIEVE PROGRAM

618-453-6155  
[achieve@siu.edu](mailto:achieve@siu.edu)

### Services

Academic Solutions

Application Criteria

Application Form

Staff

FAQ

Fees

Achieve's Report Card

Alison Hiller Excellence  
Merit Award

Job Opportunities for  
Students

### Contact Us

#### Achieve Program

Northwest Annex Wing C, Rm 121  
870 Lincoln Drive, Mailcode 6832  
Carbondale, IL 62901

618-453-6155 | F: 618-453-3711  
[achieve@siu.edu](mailto:achieve@siu.edu)



### Learning Disabilities

Do you struggle with learning difficulties or organizational skills?

Are you interested in earning a college degree?

Are you worried about finding the right kind of academic support in college  
that you need?

Achieve may be the perfect fit for you!

We believe that every student has his or her own special strengths and  
weaknesses; our services are designed to meet your individual needs. Our one-  
on-one approach ensures that every one of our students receives the best  
support possible to maximize the potential for success every semester.

Find out more about how Achieve can help you! [CLICK HERE](#).

Si usted necesita información en español, por favor haga [clic aquí](#).

### SIU LINKS

[SIU Admissions](#)

[SIU Disability Support Service](#)

## ACHIEVE PROGRAM

618-453-6155  
achieve@siu.edu

### SERVICES

[Home](#) > [Services](#)

[Home](#)

#### Services

[Academic Solutions](#)

[Application Criteria](#)

[Application Form](#)

[Staff](#)

[FAQ](#)

[Fees](#)

[Achieve's Report Card](#)

[Alison Hiller Excellence  
Merit Award](#)

[Job Opportunities for  
Students](#)

#### Contact Us

**Achieve Program**  
Northwest Annex Wing C, Rm 121  
870 Lincoln Drive, Mailcode 6832  
Carbondale, IL 62901

618-453-6155 | F: 618-453-3711  
[achieve@siu.edu](mailto:achieve@siu.edu)



Achieve has been helping SIU students succeed in college for over 30 years. We serve students with ADD, ADHD, Dyslexia, Asperger's Syndrome, Processing Disorders, and many other learning difficulties. Our team of experienced staff advisors, case managers, test proctors, academic coaches, and content specific tutors work together to help you meet your academic requirements successfully.

Our experience has taught us that every student is unique. We take the time to get to know you, establish a close relationship with you, and give you the individualized attention you deserve. No matter what your challenges are, we tailor our support services to fit your personal needs. We help you figure out what works best and communicate regularly with you to make sure you are always getting the support you need.

All Achieve's services are provided in-house. By providing a centralized location for all services, our students have ease of access to assistance, higher quality of services, and better monitoring of academic progress. We believe in maintaining regular and open communication between students, parents, and instructors to ensure our students receive timely and effective support. Our goal is to help students develop skills to become successful graduates and independent adults.

[See how we can help with specific issues](#)

[Achieve Application Criteria](#)

[Contact us to discuss your specific needs!](#)



#### **Time Management or Organizational Problems?**

We can help you organize your assignments, prioritize your time, create to-do lists, weekly study/homework schedules, and even help remind you of your deadlines for papers and tests. Our case managers meet with you weekly to help you stay on track.

#### **Writing Difficulties?**

We dedicate specialized writing tutors to you to assist with any aspect of the writing process beginning with discussing ideas, outlining, to editing your papers for grammar or spelling errors.

#### **Reading Difficulties?**

We provide text-to-speech software such as Kurzweil to help you read your textbooks. If you have trouble with comprehension, our tutors will spend time with you personally to discuss readings, help you find main points, and explain concepts.

#### **Notetaking Difficulties?**

We provide assistive technology such as Livescribe so that you can record your lectures. We train you on effective note-taking skills and help you learn to utilize the recordings for reviewing class information when you study.

#### **Trouble Understanding Content or Staying Focused?**

We provide study rooms, computer labs, and academic coaches who help you break things down into manageable tasks to help you stay on track. We provide you with tutors who specialize in different content areas to help you learn and understand your courses.

#### **Test Anxiety?**

We provide personal test proctors who can read the test to you, or act as a scribe. We also provide extended time up to double the class time, and a quiet room to take your tests. We make every effort to provide an environment that is conducive to helping you stay focused and calm during tests.

#### **Trouble with Workload Management?**

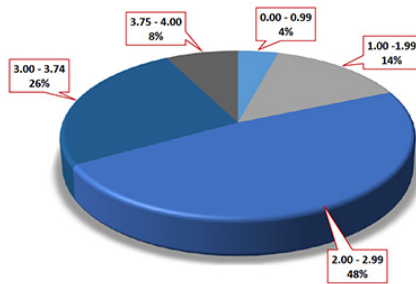
Our case managers and tutors work together to help you organize your work, set realistic deadlines for yourself, and break down assignments into manageable tasks. We help you remember your commitments and schedules.



## ACHIEVE'S REPORT CARD

[Home](#) > [Achieve's Report Card](#)

**GPA DISTRIBUTION OF ACHIEVE STUDENTS**



Grade Point	% of Students
GPA 3.75 - 4.00	8%
GPA 3.0 - 3.74	26%
GPA 2.0 - 2.99	48%
GPA 1.00 - 1.99	14%
GPA 0.00 - 0.99	4%

The pie-chart above depicts the distribution of grade point averages obtained by Achieve students. Each semester, over 80% of our students remain in good standing academically (GPA > 2.00). Our high achievers also include the top performing students at SIU who are awarded the Dean's List for Academic Achievement (GPA > 3.75). SIU's grading system: A = 4.00, B = 3.00, C = 2.00, D = 1.00, F = 0.00.

**Students in Achieve by Class Standings**

